

Customer Support

Software Release Bulletin

Date of Issue: 01/02/2026

Product: VSC 8000/HS
Version no: 8.3.385

Release Type : Minor

VSC 8000/HS

Version 8.3.385

Release Type: **Minor**

Key Features

- VSC STAC support added (chargeable feature)

IMPORTANT NOTES

1. A new license will be required at the time of installation for this version to align our licensing function across products. We would recommend requesting the new license in advance, as not an instant turnaround, by emailing the serial number of the device to Customer Support.
2. For Customers running FF3D, we would also strongly recommend updating to the latest version of FF3D (V3.1.3.0) alongside this VSC 8000/HS update. This is available from the Customer/Distributor Portal within the VSC 8000/HS section for download.
3. There is also a mandatory update of MergelImage to V24 **IF** FF3D is updated. Do NOT just update one of these modules as there are some dependencies between them within the latest version so must be upgraded as a pair. Once both have been upgraded, it is not necessary to perform a paired update in the future unless specifically stated on the software release bulletin. MergelImage is available from the Customer/Distributor Portal within the VSC 8000/HS section for download.

See Installation & Configuration Guide below for a full clean installation process and use the following for a software upgrade only.

Update 06/02/2026

Licensing

Please save new licenses in the following location.

C:\Program Files x86\Foster and Freeman\VSC8000HS

Installation Instructions:

1. Log into the Distributor Website or Customer Portal as appropriate, navigate to the relevant product area, select the Software Updates drop down and Click the 'Download' button next to the 'SW Release' to download the zip file. Version numbers within the installation process are representative only.

VSC[®] 8000/HS Range

Our advanced QDE workstations, the VSC 8000/HS and VSC 8000/LF combine sophisticated digital imaging and multi-wavelength illumination technology with a clear and efficient software interface to provide complete solutions to the examination of questioned documents. [View VSC 8000/HS at fosterfreeman.com](#)

User Manuals	+
Software Updates	-

VSC 8000/HS Software Release Bulletin Version 8.1.325 (08-07-24)
1 file(s) 842.09 KB

DOWNLOAD

VSC8000/HS SW Release v8.1.325 05-07-2024
1 file(s) 1,193.99 MB

DOWNLOAD

2. Right click the file and select "Extract All..".
3. Ensure "Show Extracted Files" is checked and click "Extract".
4. In the folder that opens, double-click the setup folder
5. Double-click the file "Basler_pylon_6.0.1.18259.exe".
6. Follow the on-screen instructions.
7. Once completed, in the same folder, right-click the file "setup.exe" and click "Run as administrator".
8. Follow the on-screen instructions.
9. Once completed, restart the PC.

This version contains the following enhancements and fixes.

ID	Change	Work Item Type
3683	Auto focus issue	Change Request
23911	Measurements not accurate in Live+Stored window	Change Request
26168	Suite Build 325 - Cannot open *.jpeg image	Change Request
28685	Option to export images to a fixed size adjusted in settings	Change Request
30750	Banknote area function showing the wrong measurements	Change Request
32040	JPG image saved in VSC8000/HS being imported as a thumbnail into Word	Change Request
28107	Keeping 'Show details' is incomplete	Bug
30704	Barcode Display Barcode on Image text box loses white background when reading a second barcode	Bug
32318	Add VSC_STAC option support to the VSC8000/HS	Minor Project Task
33715	Measurements not accurate in Live+Stored window	Software Task
33716	Update Basler	Software Task
34178	Software crashes while generating a PACE report	Bug
34179	IPI & LS++ license key options are available in 'General Settings'	Bug
34182	IPI window options are not available (intermittent)	Bug
34202	Access violation error in 'Display barcode data'	Bug
34208	LS++ is not working under certain circumstances	Bug
34230	Software crashes when deselecting the OCR screen	Bug

VSC 8000/HS

Software Installation & Configuration Guide

Installation Types

1. New, clean install: Please follow all steps within this guide in the order listed.
2. Software upgrade: Please follow the installation instructions within the release bulletin above and use this complete guide as reference where needed.

Access Software Download

1. Log into the Distributor Website or Customer Portal as appropriate, navigate to the relevant product area, select the Software Updates drop down and Click the 'Download' button next to the 'SW Release' as highlighted

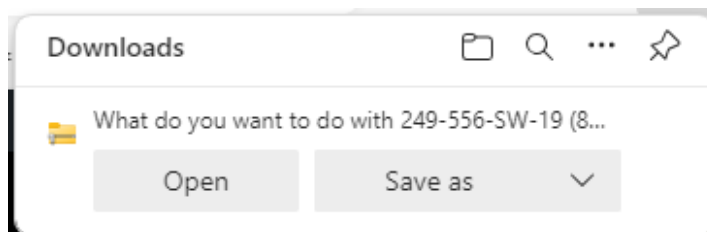
VSC[®] 8000/HS Range

Our advanced QDE workstations, the VSC 8000/HS and VSC 8000/LF combine sophisticated digital imaging and multi-wavelength illumination technology with a clear and efficient software interface to provide complete solutions to the examination of questioned documents. [View VSC 8000/HS at fosterfreeman.com](#)

User Manuals	+
Software Updates	-

VSC 8000/HS Software Release Bulletin Version 8.1.325 (08-07-24) 1 file(s) 842.09 KB	DOWNLOAD
VSC8000/HS SW Release v8.1.325 05-07-2024 1 file(s) 1,193.99 MB	DOWNLOAD

2. On the top right of the screen, you will see the standard Windows Download options so 'Save As' to suitable location. Note, the files can be quite large so may take some time to download.



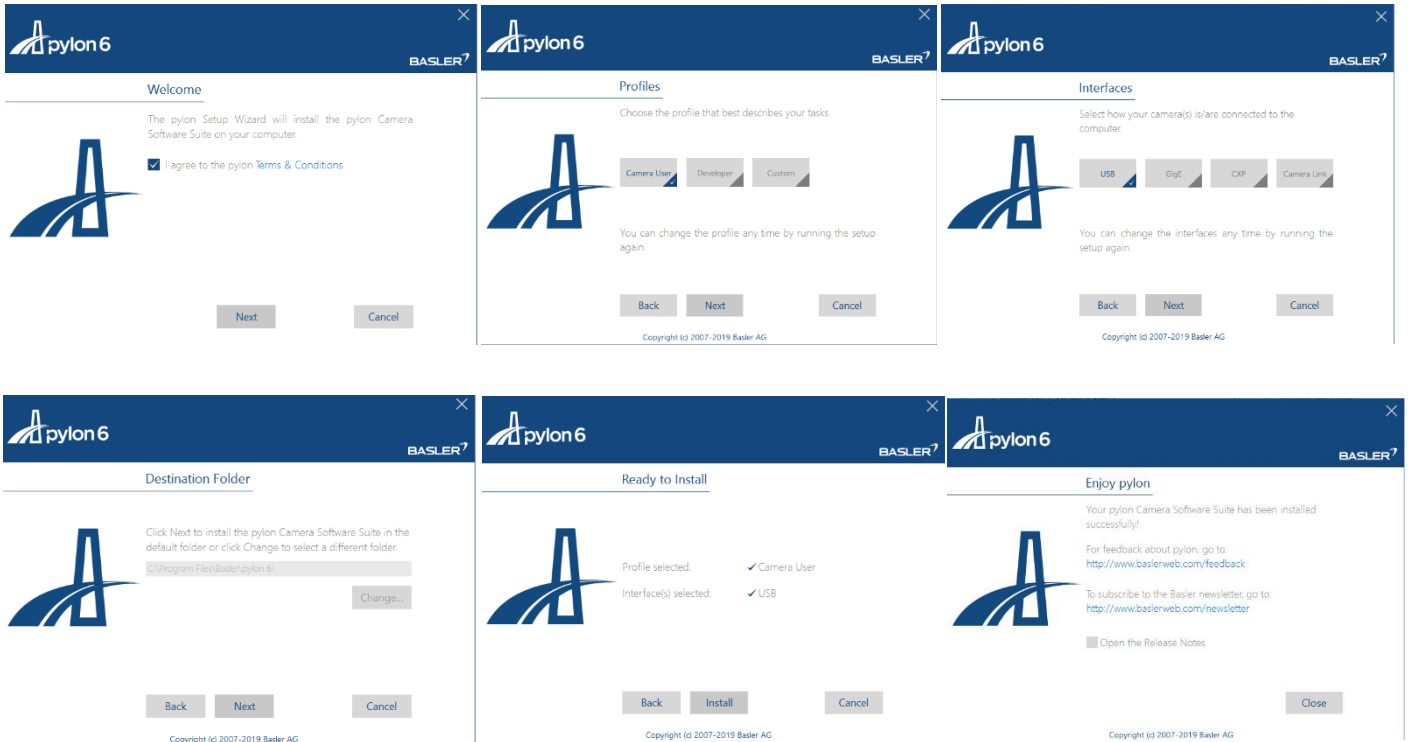
3. Copy the zip file onto your VSC8000/HS PC.

Software Packages

Basler Pylon Viewer

1. Open the installer, which is located in the 'VSC Suite 8 Setup' folder.
2. Follow the on-screen setup as shown.

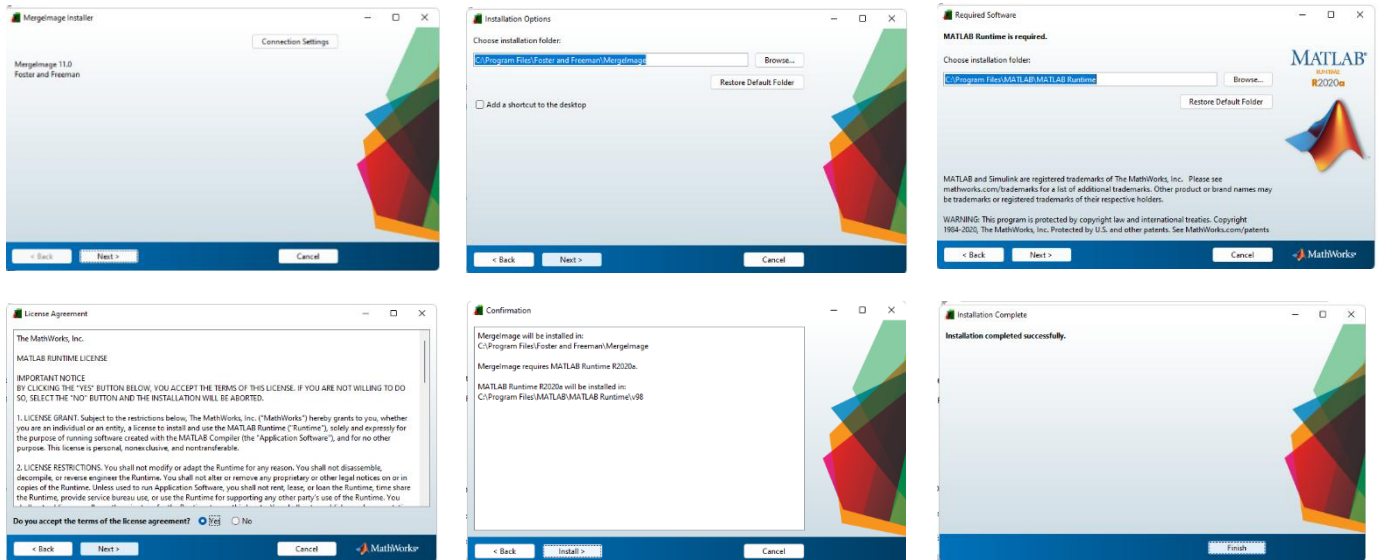
Support	25/05/2022 10:17	File folder	
Video Codec	28/07/2020 15:58	File folder	
autorun.info	20/03/2007 23:48	INFO File	1 KB
Basler_pylon_6.0.1.18259.exe	12/05/2021 08:36	Application	384,100 KB
README.TXT	12/05/2021 08:48	Text Document	2 KB
setup.exe	22/02/2004 23:00	Application	137 KB
SETUP.LST	25/05/2022 10:17	LST File	10 KB



Merge Image 11

Note: This application is a separate Download

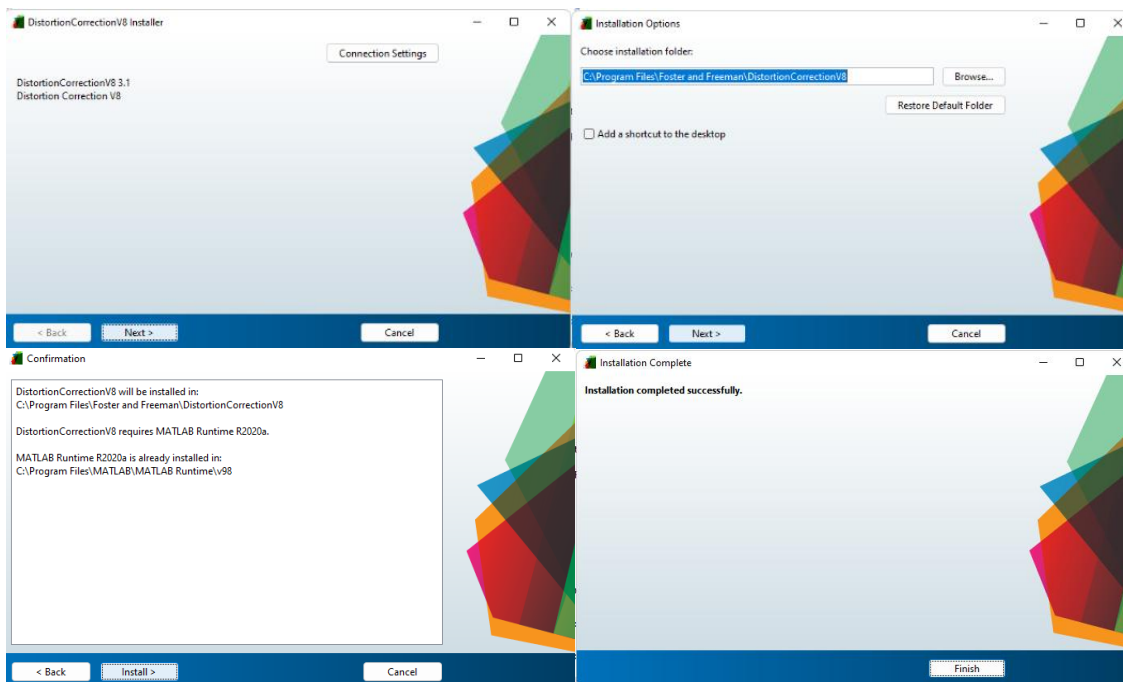
1. Open the installer, located in the Software folder of the f+f drive.
2. Follow the on-screen setup as shown below.



Distortion Correction 3.1

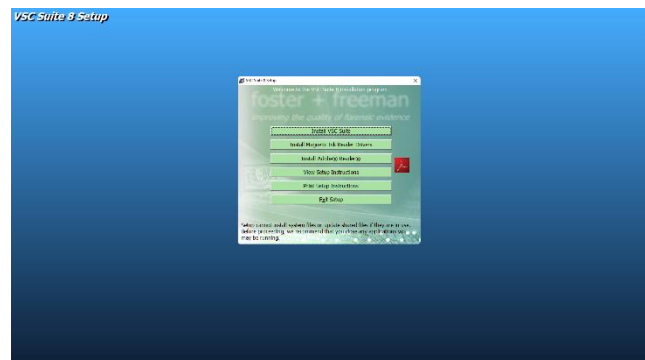
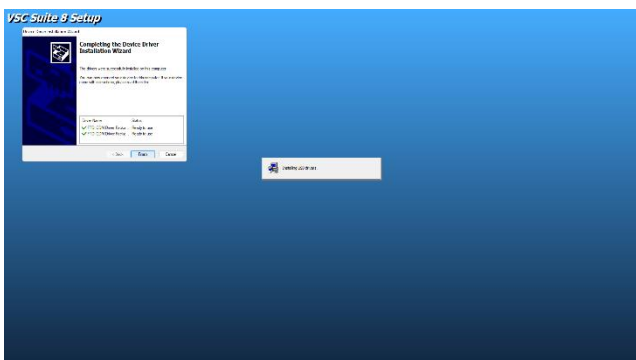
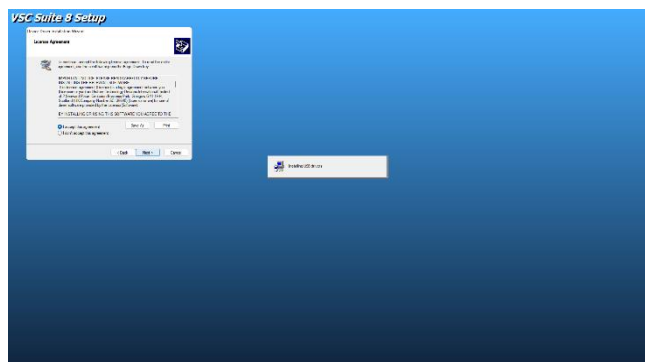
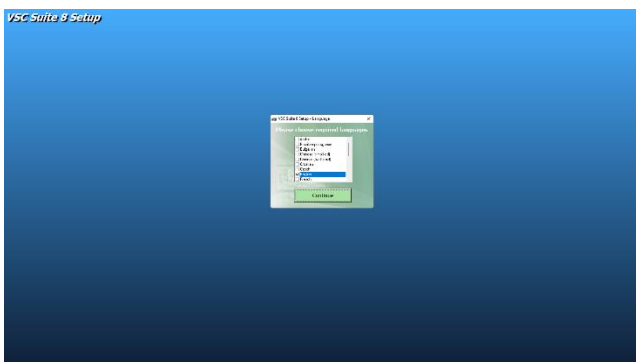
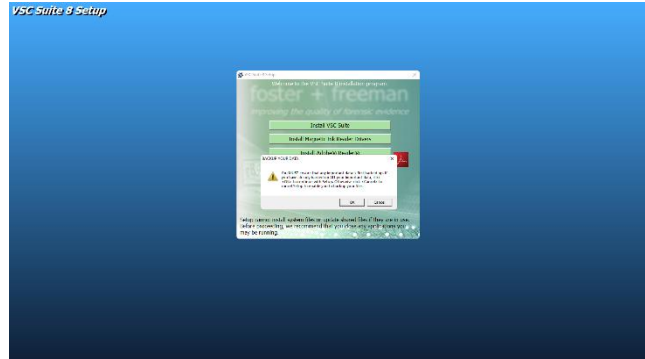
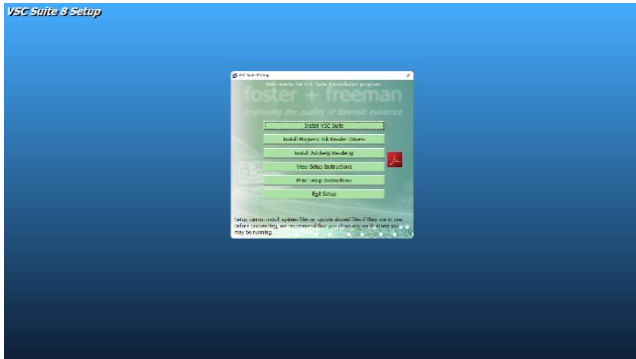
Note: This application is a separate Download

1. Open the installer, located in the Software folder of the f+f drive.
2. Follow the on-screen setup as shown below.



VSC Suite

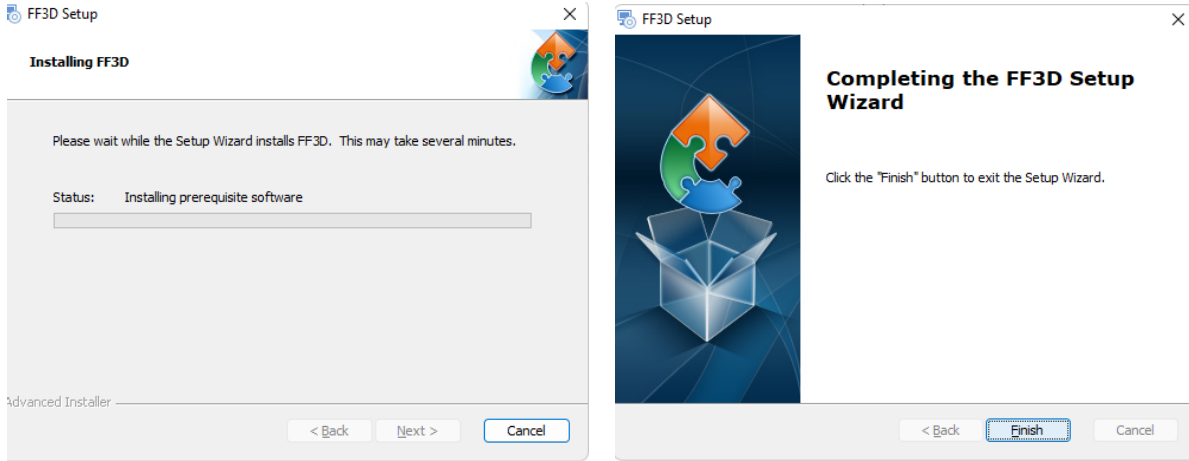
1. Navigate down the structure where you will find a Setup.exe file. Double-click the .exe file.
2. Follow the on-screen setup as shown.



ff3D

Note: This application is a separate Download

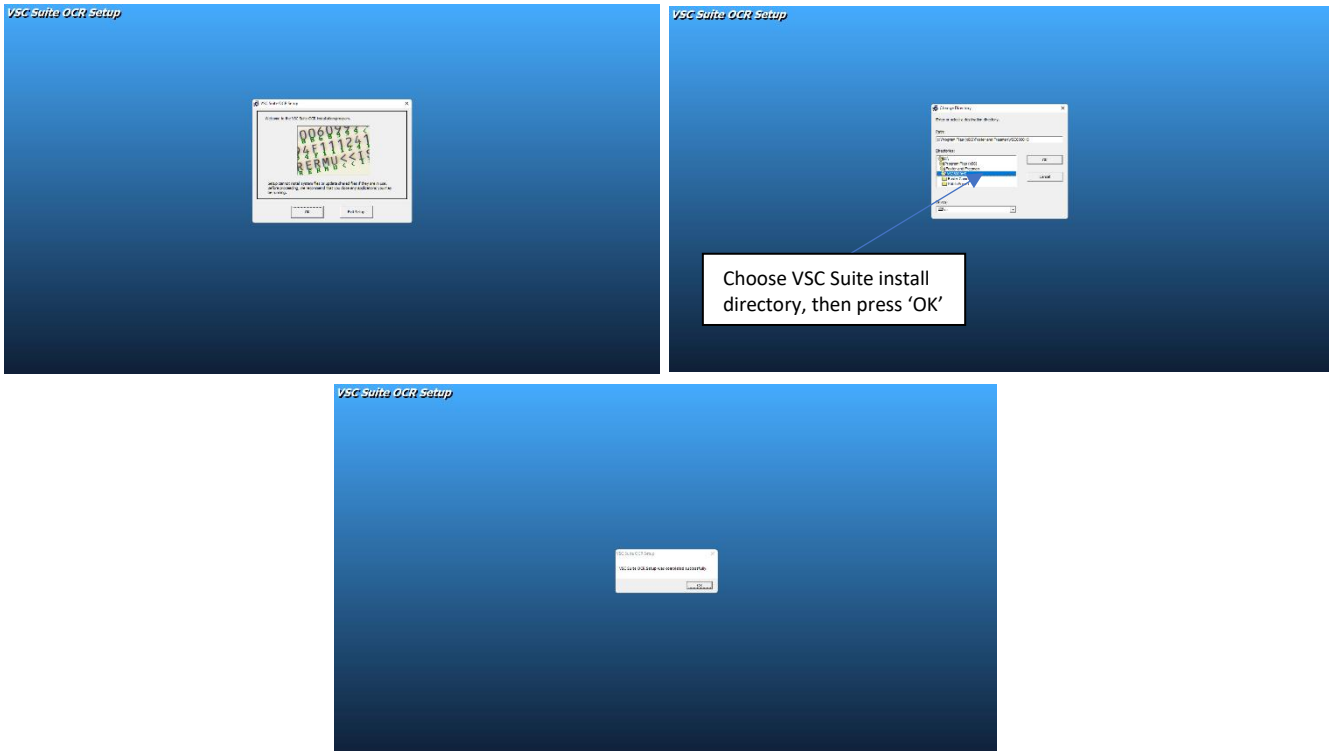
1. Open the installer, located in the Software folder of the f+f drive.
2. Follow the on-screen setup as shown below.



OCR

Note: This application is a separate Download

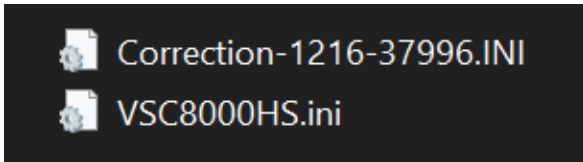
1. Open the installer, located in the Software folder of the f+f drive.
2. Follow the on-screen setup as shown below.



Configuration Files

Note: If a fresh install, this section is relevant but not for an upgrade as files will already be present and correct.

VSC Suite requires two .ini files to function correctly. These will be provided by f+f, with the installation software.



Copy these two files to the following directory - C:\ProgramData\Foster and Freeman\VSC8000HS\