

Customer Support

Software Release Bulletin

Date of Issue: 02/03/2026

Product: DCS® 5
Version no.: 5.1.433

Minor RELEASE

DCS®5

Version 5.1.433

Release Type: **Minor**

Key Change

- Quality of Life Improvements

Installation Instructions:

This version can be installed over the previous version as an update. Please see below for a detailed installation guide.

IMPORTANT

Prior to upgrading to the version in this release notification, please Download and install the relevant pre-requisite (also listed on the portals) under the following conditions;

1. Upgrading from a a DCS version **older than 5.1.426**
2. If performing a completely fresh DCS install

Pre-requisite: 'DCS5 (IP7.0) Prerequisite' OR 'DCS5 (IP7.1) Prerequisite'

Whether you require IP7.0 or IP7.1 variants is dependent on the version of Image Pro you are licensed for as described on your dongle. See Technical Support Bulletin 2024/0003 attached to the end of this release note for further information on how to confirm which version you are licensed for.

This version contains the following enhancements and fixes.

ID	Change	Work Item Type
23419	DCS5 - add lens details to audit trail	Change Request
23424	DCS5 - Draw ruler option - Ruler not displayed correctly	Change Request
29873	Vertical scale pop-up box isn't translated into Spanish on CSU controls in DCS5	Change Request
32127	DCS5 - ability to import TIFF images more easily from CL-AUTO	Change Request
33839	Ability to use full stops in case/exhibit/image details	Change Request
34011	Ability to turn off image information on DCS5 Quick Print images	Change Request
34871	J2k export issues	Bug
34863	Entering restricted windows characters when adding image details	Bug
34880	Clicking browse preview captures a preview	Bug
34885	Notes in audit trail	Bug
28016	Arabic to English - Translation	Minor Project Task
34002	SPA Quick Print Request	Minor Project Task
34881	Unable to open .JP2 images through 'Image file' option	Minor Project Task
34886	Switching off live mode takes a preview.	Minor Project Task

DCS[®]5

Software Installation
&
Configuration Guide

Introduction

This guide provides step-by-step instruction on how to install the DCS5 software. Version numbers listed are representative and will differ dependant on the version being installed.

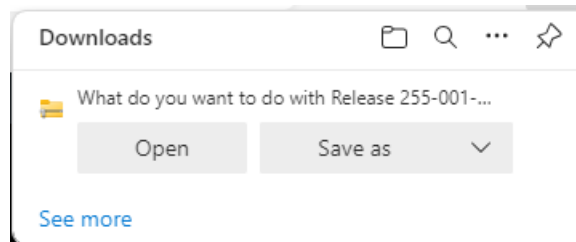
Please note this guide is based around Microsoft Edge

Software Update

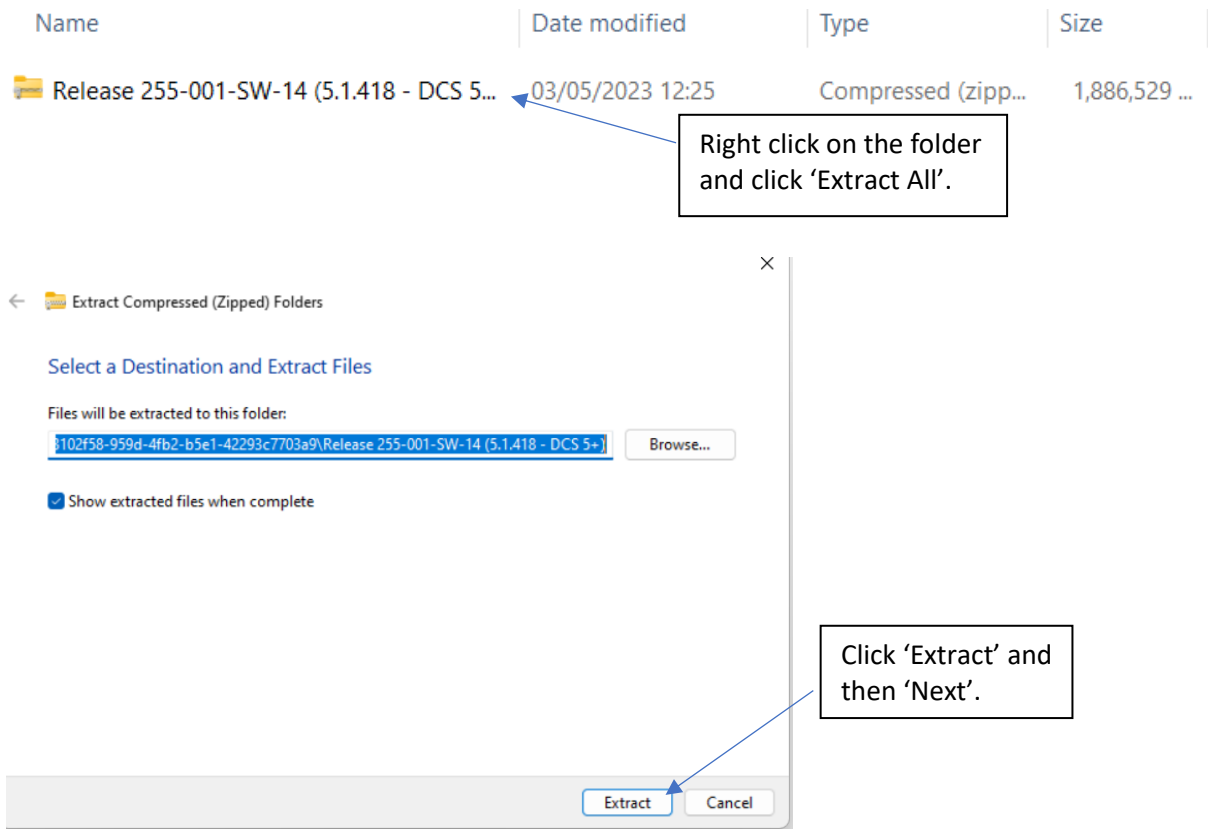
1. Log into the Distributor Website or Customer Portal as appropriate, navigate to the relevant product area, select the Software Updates drop down and Click the 'Download' button next to the 'SW Release.....'. As stated above, please ensure the pre-requisite is installed first **ONLY** if a completely fresh install. If simply updating, this is not required.

Software	
DCS 5 Software Release Bulletin v5.1.426 07-05-24 1 file(s) 535.10 KB	DOWNLOAD
DCS5 SW Release v5.1.428 25-09-2024 1 file(s) 312.60 MB	DOWNLOAD
DCS5 (IP7.0) Prerequisite 1 file(s) 1,268.30 MB	DOWNLOAD
DCS5 (IP7.1) Prerequisite 1 file(s) 786.80 MB	DOWNLOAD
CrimeLite 8x4 FW Release v1.0.0.234 05-08-13 1 file(s) 42.85 MB	DOWNLOAD

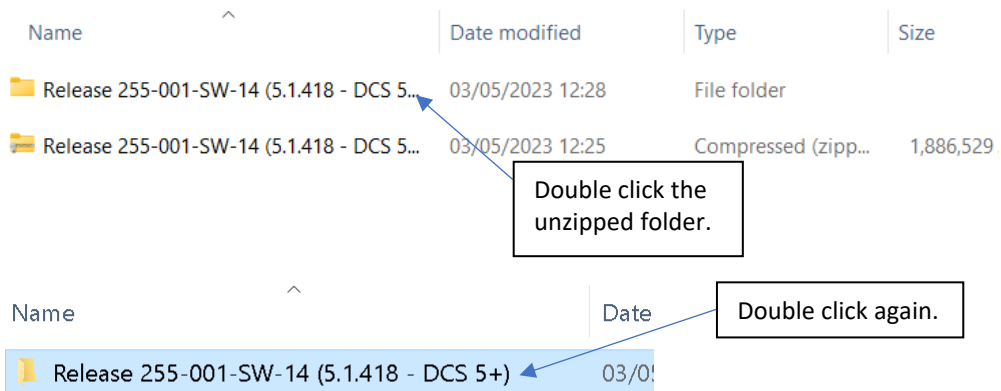
2. On the top right of the screen, you will see the standard Windows Download options so 'Save As' to suitable location. Note, the files can be quite large so may take some time to download.



3. Go to the folder where you have saved the zip file and Extract the content.



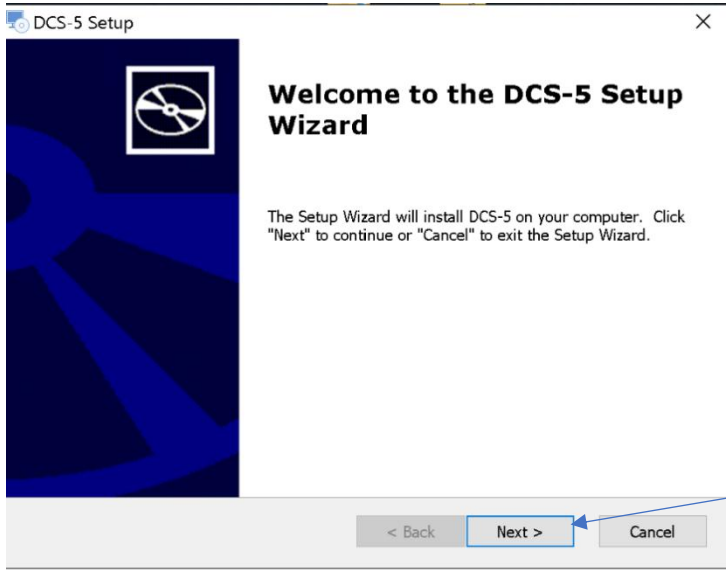
4. Double click the Extracted folder.



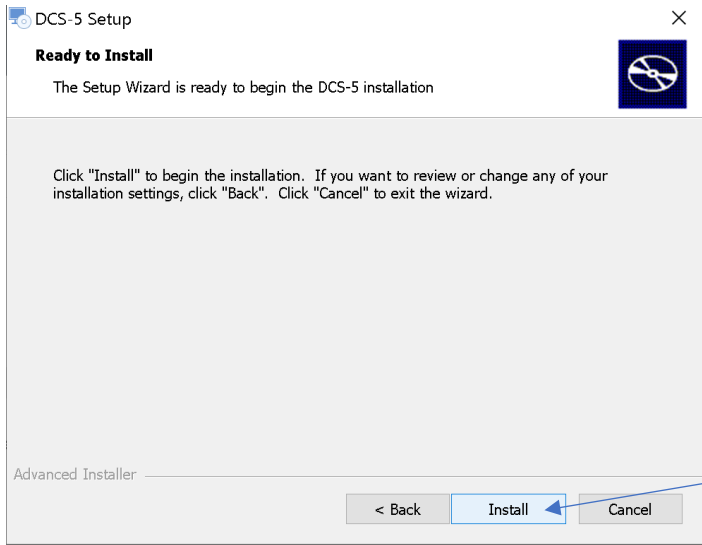
5. Finally, double click on the application called "DCS 5.1.4xx".

Windows 8 & 10 Drivers	03/05/2023 12:28	File folder
DCS 5.1.418.exe	18/04/2023 12:26	Application
How to upgrade to Image Pro Analyzer 7 (003)....	08/06/2022 15:47	Microsoft Word Doc...
Image Pro Analyzer 7.0.1.1 Patch.exe	31/10/2022 17:37	Application

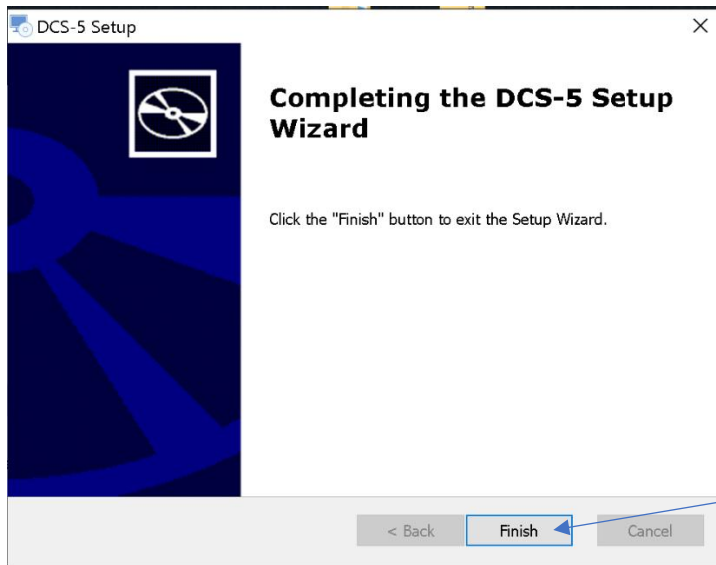
Double click.



Click 'Next'.



Click 'Install'.



Click 'Finish'.

Customer Support Bulletin

Date of Issue : 15/05/2024

Reference : 2024/0003

DCS 5 Upgrades and Image Pro Analyzer 7.1

DCS 5 Upgrades and Image Pro Analyzer 7.1

Dear Valued Customer

A new release of DCS 5 software V5.1.426 was issued on May 7th May and the Download zip file contained a document entitled 'How to upgrade to Image Pro Analyzer 7.1 with DCS 5.1.422'. The document implied that you need to upgrade your Image Pro Analyzer software to 7.1 to enable correct operation with Windows 11.

All new DCS systems are shipping with Image Pro 7.1 but does require a different license so if you are **upgrading** your DCS 5 software to run on Windows 11, **DO NOT** update Image Pro to 7.1 as you will be required to purchase a new license.

- If running Image Pro 7.0, which will be the case for most customers, this will be fine to continue with.
- If you are currently running Image Pro 6.3 on a DCS 5 system, it is likely your dongle will already support 7.0 but please see visual check below and contact Customer Support to cross check before proceeding.
- If you have upgraded your DCS 5 system from an old DCS 4 system in the past, please contact Customer Support as you will not have license support for Image Pro 7.0 or 7.1 and be required to purchase a new license.

As a visual check, if your DCS dongle looks similar to the image to the right where the important element is the **15N70000-xxxx** number, it will run Image Pro 7.0 but not 7.1.

If you have already upgraded to Image Pro 7.1 and is now asking for a new license, please submit a Support Request for assistance.

We apologise for any inconvenience caused by the misleading information within the release notification.



Customer Support Team

Submit New Support Request

foster+freeman
FORENSIC SCIENCE INNOVATION